



2141 ICON Way, Vacaville, CA 95688 - Tel: 707.564.4000 – www.iconaircraft.com

SERVICE BULLETIN

SB-051522 REV A

DATE ISSUED: 05/15/2022

DATE EFFECTIVE: 05/15/2022

SUBJECT: Redressal of ROTAX SB-912i-013 replacement of electrical fuel pump(s) for ROTAX aircraft engines

AIRCRAFT AFFECTED: **MODEL:** A5

S/N: ASN00001 to ASN00144

REQUIRED ACTION: Inspect fuel pumps for ROTAX serial numbers S/N 180500 up to S/N 203724. If the ROTAX fuel pump is within this range (including S/N 180500 and S/N 203724), comply with ROTAX Service Bulletin SB-912i-013 dated 11 April 2022.

TIME OF COMPLIANCE: Refer to ROTAX SB-912i-013, Section 1.5:

- Carry out this replacement of the fuel pump assemblies listed in section 1.1., according to the instructions in Chapter 3 at the next ROTAX® scheduled maintenance event, but at the latest after 1 year (from the date of the initial issue of this Service Bulletin)

PURPOSE: Aircraft may suffer poor fuel pump performance resulting in a MAIN and/or AUX fuel pump failure. Signs of poor fuel pump performance can be detected audibly on the ground before engine start after the Master Switch is turned ON. In addition, any illumination of the FUEL PRESS annunciator panel caution light, even momentary illumination, would be an indicator of poor fuel pump performance.

WARRANTY

Refer to ROTAX SB-912i-013, section 1.7 for labor and time credit.

PARTS LIST:

PART	DESCRIPTION	A5
(Refer to SB-912i-013)		

INSTRUCTIONS:

Please refer to the attached ROTAX Service Bulletin SB-912i-013 dated 11 April 2022.

METHODS OF DETERMINING THE FUEL PUMP ASSEMBLY SERIAL NUMBER:

The below is a list of some (not all) acceptable ways to determine the serial number of the installed fuel pump assembly:

- 1) Review the Airframe and Engine logbook entries to identify the fuel pump assembly serial number. Cross check this number against the affected list of pumps in the ROTAX SB-912i-013
- 2) Carefully flex back the left-hand cabin side liner as shown in figures 1 and 2 and visually inspect the fuel pump for a serial number as shown below. Figure 3 may be helpful in determining the

SERVICE BULLETIN**SB-051522 REV A**

location of the pump in the aircraft and figure 6 may be helpful in locating the serial number on the fuel pump assembly

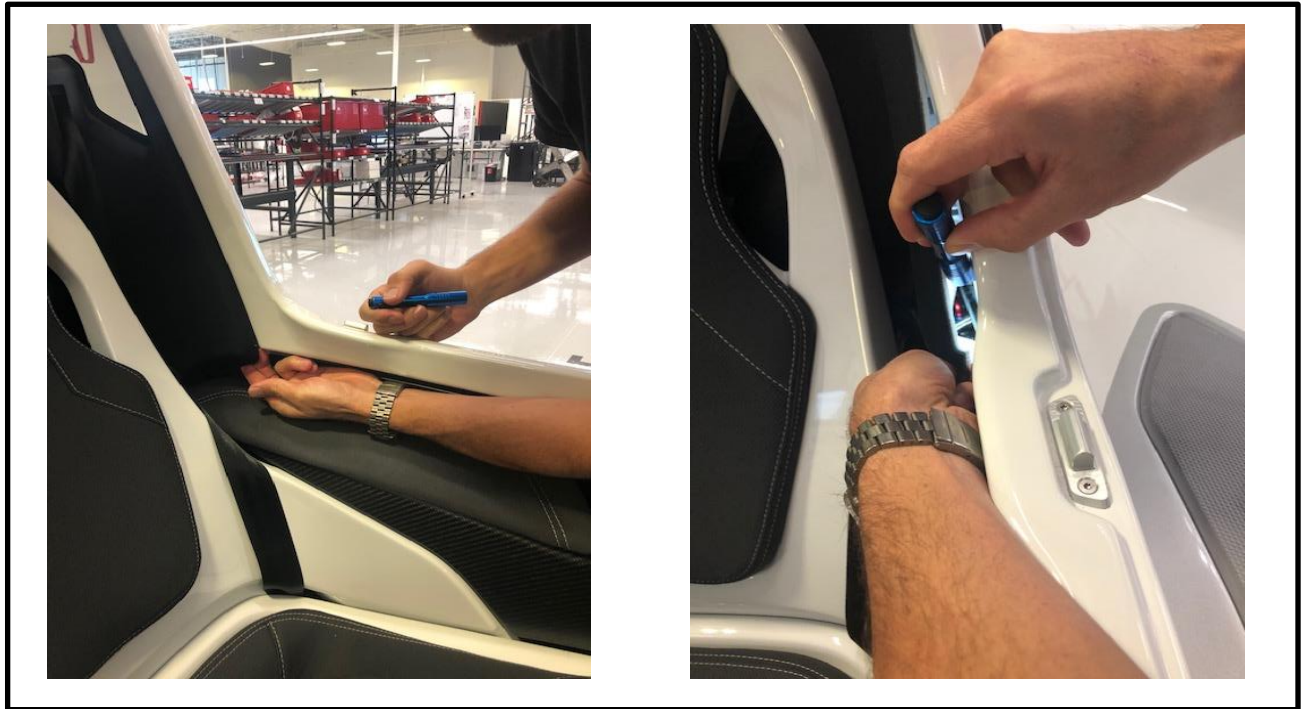


Figure1: Hook the left side cabin liner with fingers as shown and carefully flex liner inboard enough to insert a small flashlight.

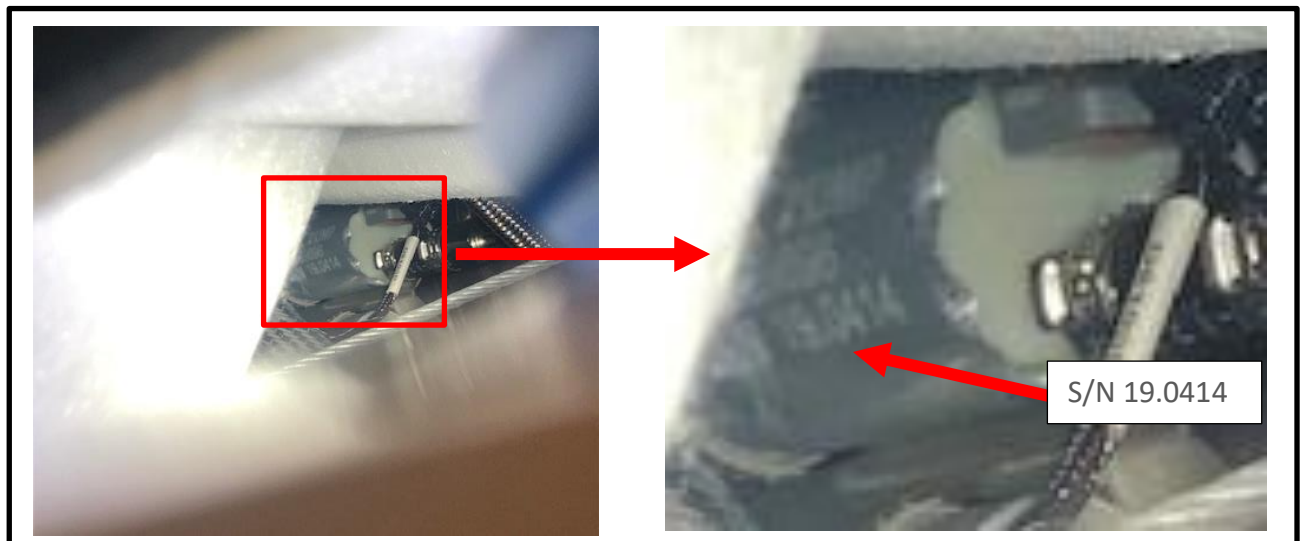


Figure2: Sight down the opening identifying the fuel pump on one of the pump modules as shown.

SERVICE BULLETIN**SB-051522 REV A**

- 3) Using a borescope insert the camera into the opening of the pilot side lap belt pass through as shown the following figures 3 through 6:



Figure 3: Borescope inspection technique though the pilot side lap belt pass through

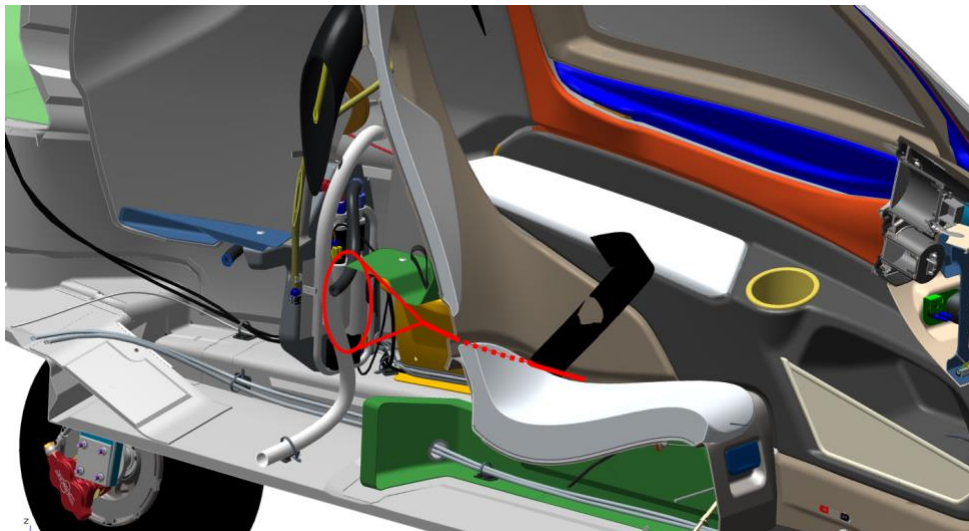


Figure 4: Cut away with parts remove for clarity of the approximate path of the borescope to view the fuel pump serial number

SERVICE BULLETIN

SB-051522 REV A



Figure 5: View of the borescope screen showing the fuel pump serial number.

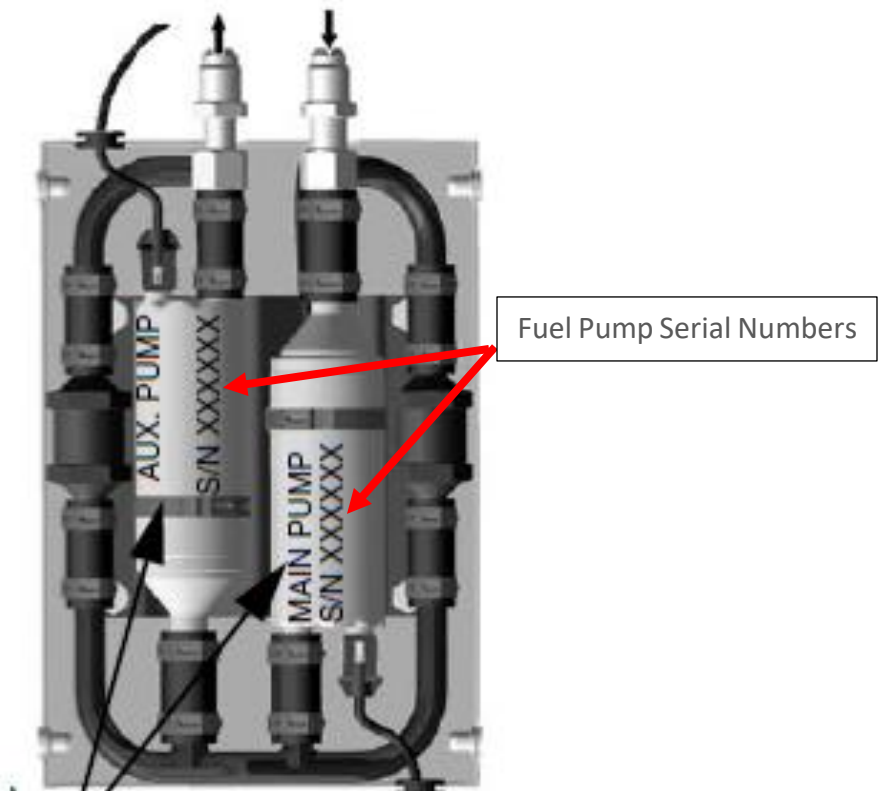


Figure 6: Graphic of approximate location of serial number markings on the fuel pump assembly.



2141 ICON Way, Vacaville, CA 95688 - Tel: 707.564.4000 – www.iconaircraft.com

SERVICE BULLETIN

SB-051522 REV A

Make the following logbook entry:

If the fuel pumps have been removed, then use the following entry:

“The corrective action of Safety Bulletin SB-051522 REV A has been complied with and reported to ICON Aircraft Service. Main and Auxiliary fuel pumps serial number _____ and _____ were replaced with Main and Auxiliary fuel pumps serial number _____ and _____. (ref. FAA Exemption 10829B).”

If the fuel pumps are not affected by the ROTAX SB-912i-013 and did not get replaced, the use the following entry:

“The corrective action of Safety Bulletin SB-051522 REV A has been complied with. It was determined that the installed fuel pumps are not affected by the ROTAX SB-912i-013. The Main and Auxiliary fuel pumps serial numbers are _____ and _____. “

If you have questions, comments, or concerns about this Safety Directive/Alert and/or if you are no longer owner/operator of this aircraft, please forward this information to the present owner/operator and notify ICON Aircraft at:

ICON Aircraft
2141 ICON Way, Ste 100
Vacaville, CA 95688
(855) FLY-ICON or (707) 564-4000
support@iconaircraft.com

Please include the aircraft registration number, serial number, your name, and if known the contact information of the new owner/operator.